



9 Annette Piercy creates beautiful pottery homeware in a variety of glaze colours. With attention to form and function Annette's pots are intended to enhance shared moments and memories created with friends and family.
97C Whiriwhiri Road, Waiuku



13 Altered State Gallery The home of one of a kind artworks and sculptures made from a variety of every day items, re-purposed materials and weird and wonderful objects turned into creations that will change your perception of objects around you, as well as things you use everyday.
60 Aka Aka Road, Puni



17 Pieter Minnaar is an experienced commercial photographer skilled in diverse disciplines including Industrial photography, Portrait, Corporate, Wedding and Real Estate photography. He loves photographing children, as challenging as it is rewarding and recently fell in love with pet photography.
14 O Ruamano Crescent, Pukekohe



10 Jane Thorne has a passion for painting insects. Visit her home/studio where there are illustrated picture books and paintings available for purchase. There will be works in progress as well as prints and creative activities for all ages.
142 Constable Road, Waiuku



14 Evelyn Dunstan has been casting crystal glass for over 20 years, exhibiting and teaching widely overseas. Influenced by ecological concerns, her studio is in a regenerating bush block in Puni. Come explore the process involved and see what can be achieved with lost wax kiln cast glass.
87 Settlement Road, Puni



18 Visit Katie Blundell Artist at the Franklin Arts Centre during the Art Trail to see her new exhibition 'Going To Seed'. Celebrating the Franklin area, the work is inspired by connecting with nature, place and the community.
Open Saturday, Sunday only
The Franklin Arts Centre, 12 Massey Avenue, Pukekohe



11 Rosalie Niu displays original pencil sketches and canvas paintings. The house itself is a visual feast for the senses with most walls covered in murals.
6 Second Avenue, Glenbrook Beach



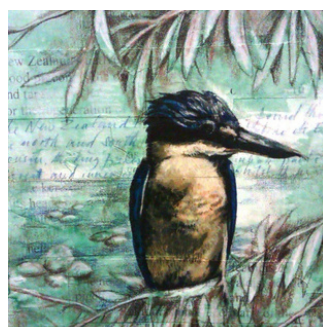
15 Aimee Reynolds displays finished Encaustic pieces... hot wax painting, where she uses foraged flowers and foliage. They get embedded into the wax which she then scratches into and adds oil paints. Fusing in between each layer with a hot air gun.
205a Cameron Town Road Pukekohe



19 Eve Hawkins-Green enjoys painting animals and people which she brings alive in her work by capturing a moment in their lives. This year they are joined by painter and floral artist **Gaylene Wheeler**. **Jillian King** has long been a painter, whose work reflects a narrative style, often incorporating iconic buildings and people.
181F Golding Road, Pukekohe



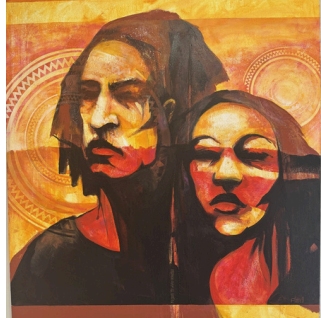
12 Lisa Bate creates contemporary sculpture predominantly made using kiln cast glass and mixed media. Cast glass art works explore repetition of form using mainly a lost wax technique. Lisa has received several awards.
7 Orawahi Road, Glenbrook, Waiuku



16 Red Earth Studio is the home to all things creative. From art workshops and classes to events and art tours. Find out about interactive projects and mixed reality experiences based in your communities.
578 Onewhero Tuakau Bridge Road, Onewhero



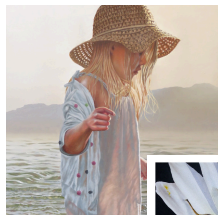
20 Jane Crosbie's bold multilayered originals painted in oils, acrylics or mixed media are alive with movement and texture created by palette knives
Unit 7, 7 Keith Place, Pukekohe



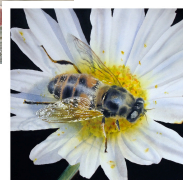
1 Blue Light Youth Camp and Ngaati Te Ata Mural Project. A series of murals painted by local Maori artists, inspired by the unique Awhitu Peninsula landscape and the Tupuna of the traditional land owners.
Blue Light Youth Camp 311 Hatton Road Awhitu- Awhitu Regional Park



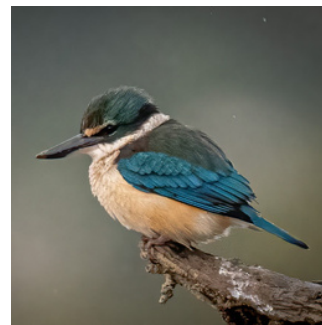
5 Raewyn Pope creates acrylic, watercolor, and mixed media art inspired by the great outdoors and the landscapes she visits. Her work captures the essence and stories of these places, sharing their unique beauty.
92 Sandspit Road, Waiuku



2 Paul Coney has a well-known mastery of the application of watercolour and oil. Paul has a strong following and has sold his work in New Zealand and overseas for 45 years.



Marietta Coney enjoys painting Still Life in oil painting or capturing everyday life skillfully, in watercolour.
195A Brook Road, Awhitu



6 Waiuku Camera Club displays images from Waiuku Camera Club members including a feature display of the Waiuku Estuary in all its glory.
11 Bowen Street, Waiuku (old Harcourts building)



3 Kerry Collins of Bent Tree Textiles, **Glenys Duff** of Taraire Croft and **Frances Stevens** of Kate Alberta Weaving will be demonstrating indigo dyeing and hand weaving. Their quality fabric, quilts, scarves, wraps and other textiles are bound to woo you. There is also the opportunity to try dyeing.



Pollok Hall, 4 Cemetery Road, Awhitu



7 Artisans Alcove is a wellbeing through creativity initiative supported by Waiuku Family Support Network. A place for Artisans to showcase & express themselves and for people to have an opportunity to purchase their art.

52 Queen Street Waiuku

4 The Pollok arts and crafts cooperative members, will have a variety of arts media on Display. A guest artist will be doing a solo exhibition at the gallery. The sculpture garden will be buzzing with a collection of popular pottery. Lynda Jane Dodd will be doing some driftwood art demo's and you can "give it a go".

2141 Awhitu Road Pollok, Awhitu



8 Scott's Steelworkz Ltd creates unique Corten Steel Braziers, Garden Art, Privacy Screens and Wind Protection made to order. We'd like to help you design the perfect gift for your hard-to-buy person. Our Waterjet can cut any material up to 100 mm thick, except toughened glass. Demonstrations will be held during the weekend. Please wear closed-in shoes.

51 Belgium Street, Waiuku



**YOUR CREATIVE DESTINATION
JUST SOUTH OF AUCKLAND**

**Free
Entry**

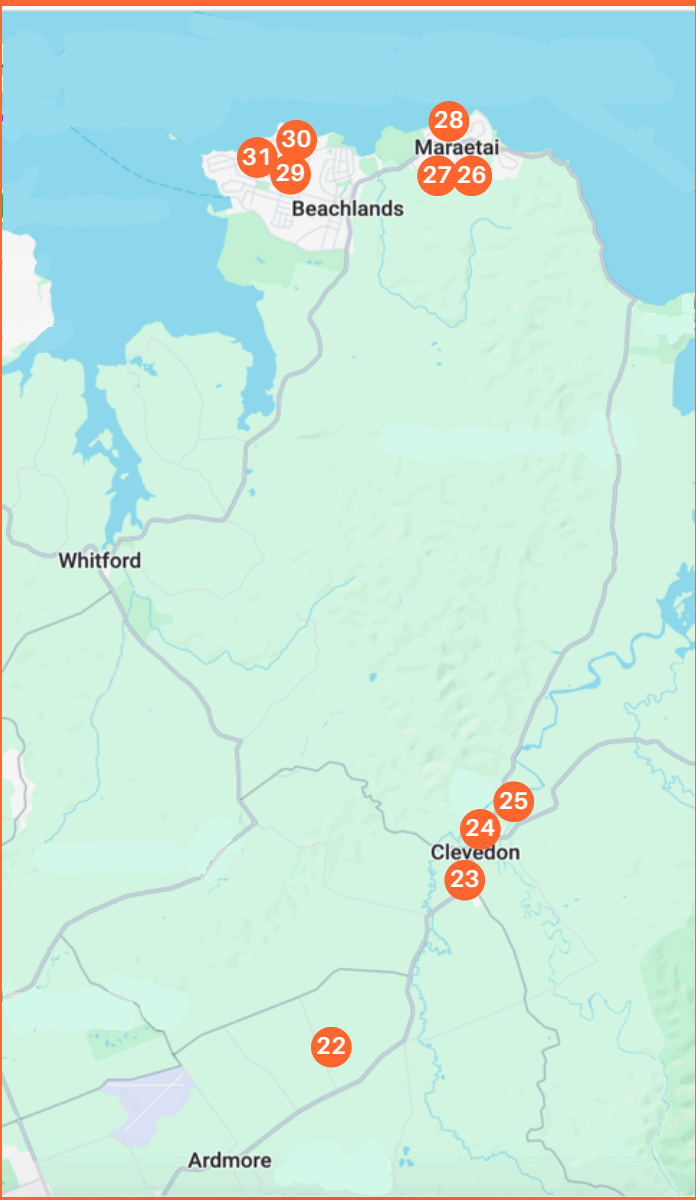
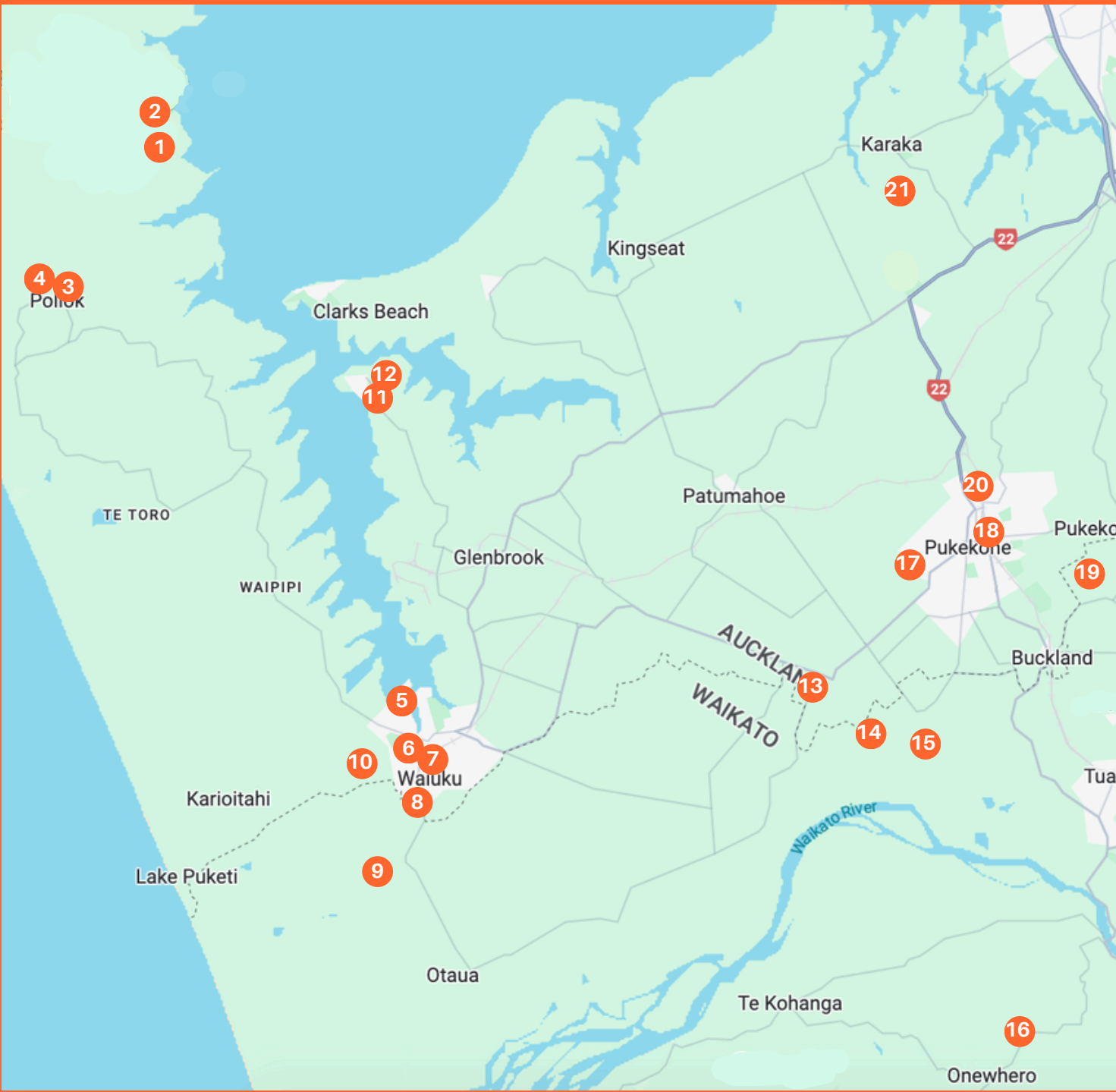
OPEN STUDIO & GALLERY EVENT 2024

**Labour Weekend:
26, 27 & 28 October
10am - 4pm**

**For more information about the artists
and to use the interactive map, visit**

www.franklinartstrail.co.nz





Scan here for
online map



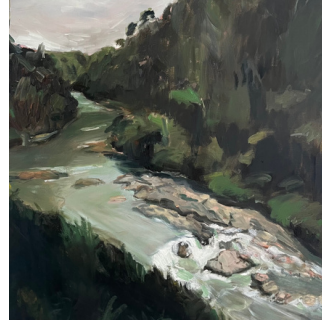
franklin_arts_trail



franklinartstrail



21 Elaine Sharplin is an accomplished Folk artist. Her studio surrounded by gardens mimics her craft. Elaine will demo basic Folk art strokes and colour mixing.
102 Muir Road Karaka 2580



25 Helen Morrison is a painter, she is influenced by expressionism, her oil paintings reflect her love of family and the surrounding landscape. Visit her home studio in Clevedon.
84 Clevedon-Kawakawa Road, Clevedon



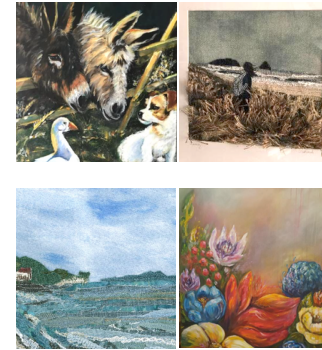
29 Tina Los is a watercolour artist inspired by her love of nature and her travels. She enjoys creating detailed and expressive paintings that capture the beauty of animals, birds, and landscapes. **Sharon Pearce** is a local artist living in Maraetai. She paints in Acrylics and Oils, mainly focusing on Landscapes, Seascapes, Birds and Flowers.
81a Second View Ave, Beachlands



22 Sandra Littlejohns-Clark paints using bold colours and dynamic imagery, painting her local landscape that is undergoing rapid manmade recontouring and reconfiguration. Her work records the impact and inevitabilities of development.
50 Parish Line Road, Clevedon



26 Karyn Fisher is a self-taught painter. After many years of painting murals she has moved on to oil on canvas. Karyn paints by eye and never knows how something is going to turnout until it's finished.
Sandra Russell is an acrylic and mural artist whose love of nature and the outdoors is reflected in her detailed work.
42 Maraetai School Road, Maraetai



30 Artists of Beachlands will be displaying a range of artwork and styles as a collective in the Beachlands Memorial Hall on Sunday. Art ranges from textile art, Acrylic, Pencil/pastel, to Watercolour. There will also be student artwork from local classes and live demonstrations.
Open Sunday only
Beachlands Memorial Hall, 49 Wakelin Road, Beachlands



23 Art Industry is run by artists Cheryl and James Wright. Unique sculpture, painting, glass, ceramics, jewellery, photography and bronze by 35 established and emerging NZ artists.
37 Papakura-Clevedon Road, Clevedon Village



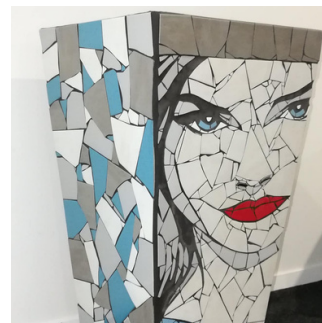
27 Carolyn Watts enjoys the depth and richness achieved using oils whether it is painting native birds, scenery or flowers. Carolyn is also an author and illustrator of children's books. Find her work at Gallery 61
61 Maraetai School Road, Maraetai



31 Amanda Spencer creates an eclectic mix of hand built ceramic sculptures including Viking & Māori heads, yachts and boats, unique bird feeders, wind chimes and so much more.
59 First View Avenue, Beachlands



24 Clevedon Creatives provides a space and gallery for a range of local artisans and makers. Including glass, painting, sculpture and more.
17 Papakura-Clevedon Road, Clevedon



28 Danielle Fernandez creates stained glass mosaic sculptural paintings and mosaic lighting in addition to ceramic outdoor pieces. Visit Mainly Mosaics, her studio, with dozens of pieces for sale.
98 Maraetai Drive, Maraetai

WITH THANKS TO THE

