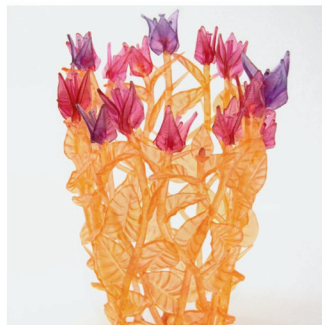




- 9 Jane Thorne** has a passion for painting insects. Visit her home/studio where there are paintings and illustrated picture books available for purchase. There will be works in progress as well as prints and creative activities for all ages.
142 Constable Road, Waiuku



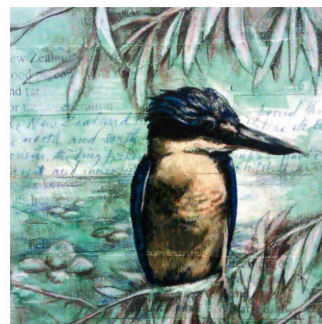
- 13 Evelyn Dunstan** has been casting crystal glass for over 20 years, exhibiting and teaching widely overseas. Influenced by ecological concerns, her studio is in a regenerating bush block in Puni. Come explore the process involved and see what can be achieved with lost wax kiln cast glass.
87 Settlement Road, Puni



- 17 Elaine Sharplin** is an accomplished Folk artist. Her studio, surrounded by gardens, mimics her craft. Elaine will demo basic Folk art strokes and colour mixing.
102 Muir Road, Karaka



- 10 WaiArt**, a local Waiuku group of 9 individual artists will show a selection of artworks at the historic Karioatahi School. The ever-popular WaiArt 2026 calendars plus a wide range of artworks on display for sale. Visitors will see the artists at work. EFTPOS available.
Kariaotahi Hall, Binns Road, Karioitahi



- 14 Red Earth Studio** is the home to all things creative. From art workshops and classes to events and art tours. Find out about interactive projects and mixed reality experiences based in your communities.
578 Onewhero Tuakau Bridge Road, Onewhero



- 18 Sandra Littlejohns-Clark** paints using bold colours and dynamic imagery. She observes her local landscape, which is undergoing rapid man-made recontouring and reconfiguration. Her work records the impact and inevitabilities of development.
342 Appleby Road, Drury



- 11 Rosalie Niu** displays original pencil sketches and canvas paintings. The house itself is a visual feast for the senses with most walls covered in murals.
6 Second Avenue, Glenbrook Beach



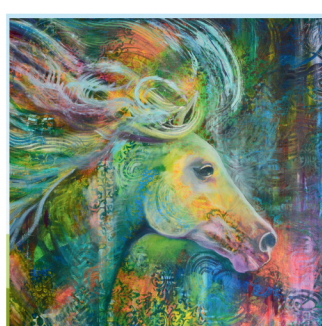
- 15 Lisa Bate** creates contemporary sculpture predominantly made using kiln cast glass and mixed media. Cast glass art works explore repetition of form using mainly a lost wax technique. Lisa has received several awards.
Activity: plaster casting, clay embossing.
The Franklin Arts Centre, 12 Massey Avenue, Pukekohe
Open Saturday only



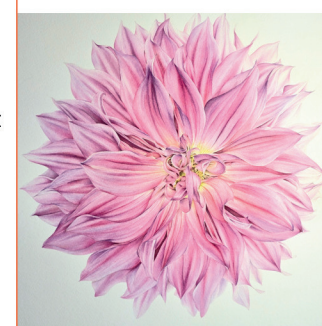
- 19 Maree Dillon** has been a lifelong sewer and recent retirement has left her with the time and energy to explore new techniques and be more creative. Fabric "speaks to me" and drives her creative process.



- 12 Altered State Gallery** The home of one of a kind artworks and sculptures made from a variety of every day items. Re-purposed materials and weird and wonderful objects turned into creations that will change your perception of objects around you.
60 Aka Aka Road, Puni



- 16 Jane Crosbie's** bold multilayered originals painted in oils, acrylics or mixed media are alive with movement and texture created by palette knives.
Unit 7, 7 Keith Place, Pukekohe



- Megan Lockwood** exhibits watercolour paintings of flowers and plants along with coloured pencil drawings of birds and animals.
Ararimu Hall: Ararimu Road, Ararimu
(Corner of Ararimu Rd & Steel Rd)
Open Saturday & Sunday only



1 Paul Coney has a well-known mastery of the application of watercolour and oil. Paul has a strong following and has sold his work in New Zealand and overseas for 45 years.

Marietta Coney enjoys skillfully painting Still Life in oil paint or capturing everyday life in watercolour.

195A Brook Road, Awhitu



5 The Stable Light Gallery offers prints and framed works with a focus on quiet, light driven imagery and thoughtful presentation.

40B Queen Street, Waiuku (Down laneway behind Unichem Pharmacy)



6 Artisans Alcove is a creative wellbeing initiative supported by the Waiuku Family Support Network. It provides a platform for local artisans to showcase their work, express their creativity, and offers the community a chance to purchase unique, handcrafted art.

52 Queen Street, Waiuku



7 Annette Piercy creates beautiful pottery homeware in a palette of timeless glazes. With a focus on form and function, her ceramics are made to be used and loved—becoming part of shared meals, quiet moments, and lasting memories.

97C Whiriwhiri Rd, RD2, Waiuku



8 Scott's Steelworkz Ltd creates unique Corten Steel Braziers, Garden Art, Privacy Screens and Wind Protection made to order. We'd like to help you design the perfect gift for your hard-to-buy person. Our Waterjet can cut any material up to 100 mm thick, except toughened glass.

Demonstrations will be held during the weekend. Please wear closed-in shoes.

14 Constable Road, Waiuku

3 Pollok arts and crafts cooperative have a variety of arts media on display at the gallery and sculpture garden. Enjoy beautiful locally made textile art and crafts, paintings, ceramics, potted plants, soy candles, knitted garments, and more.

2141 Awhitu Road, Pollok, Awhitu

4 Waiuku Camera Club presents a gallery of the members' photographic works. The presented works will be for sale.

40A Queen Street, Waiuku (Down laneway behind Unichem Pharmacy)



**YOUR CREATIVE DESTINATION
JUST SOUTH OF AUCKLAND**

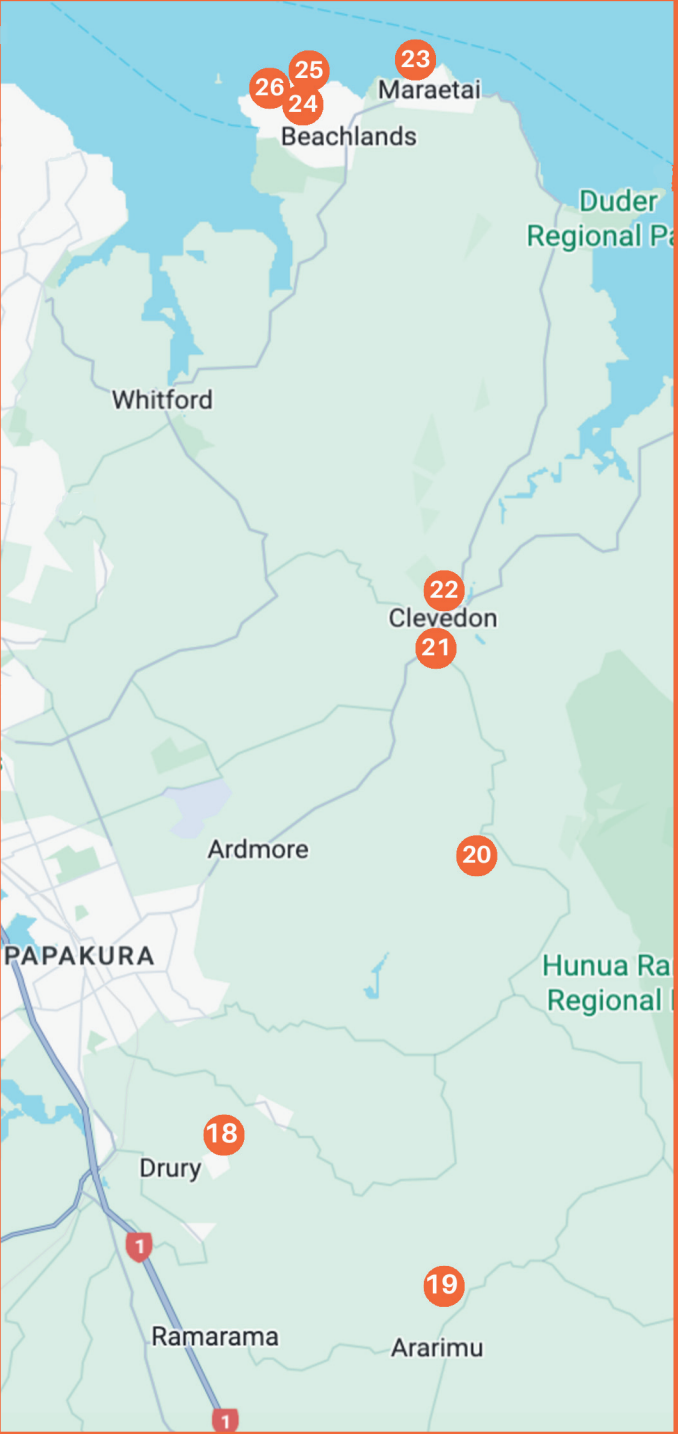
**Free
Entry**

OPEN STUDIO & GALLERY EVENT 2025

**Labour Weekend:
25, 26 & 27 October
10am - 4pm**

**For more information about the artists
and to use the interactive map, visit**

www.franklinartstrail.co.nz





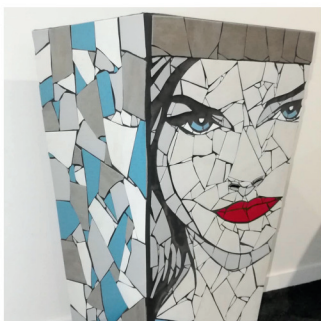
- 20 Teri Berry** is a felt-maker and potter, watch her turn fluffy wool fibres into durable felt fabric. Finished artworks and fibres available to purchase.
95 McGregor Road, Clevedon



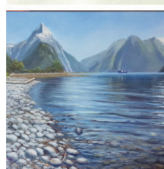
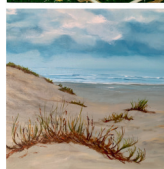
- 21 Art Industry** is run by artists Cheryl and James Wright. Unique sculpture, painting, glass, ceramics, jewellery, photography and bronze by 35 established and emerging NZ artists.
37 Papakura-Clevedon Road, Clevedon Village



- 22 Clevedon Creatives** provides a space and gallery for a range of local artisans and makers. Including glass, painting, sculpture and more.
17 Papakura-Clevedon Road, Clevedon



- 23 Danielle Fernandez** creates stained glass mosaic sculptural paintings and mosaic lighting in addition to ceramic outdoor pieces. Visit Mainly Mosaics, her studio, with dozens of pieces for sale.
98 Maraetai Drive, Maraetai



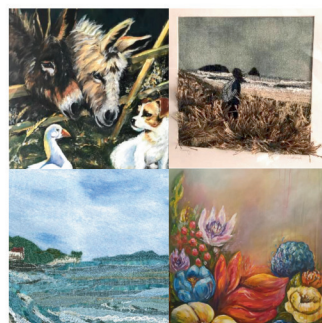
- 24 Karyn Fisher** is a self-taught painter, for many years painting murals, more recently moving on to oil on canvas. Karen paints intuitively, the work unfolding on the canvas.

Carolyn Watts enjoys the depth and richness achieved using oils whether it is painting native birds, scenery or flowers. Carolyn is also an author and illustrator of children's books.

Tina Los is a watercolour artist whose work is detailed and expressive whilst using variations of transparency and light to capture the beauty of animals, birds, and landscapes.

Sharon Pearce is a local artist living in Maraetai. She paints in Acrylics and Oils, mainly focusing on Landscapes, Seascapes, Birds and Flowers.

81a Second View Ave, Beachlands



- 25 Artists of Beachlands** will be displaying a range of artwork and styles as a collective in the Beachlands Memorial Hall. Art ranges from textile art, Acrylic, Pencil/pastel, to Watercolour. There will also be student artwork from local classes and live demonstrations.

Beachlands Memorial Hall, 49 Wakelin Road, Beachlands
Open Monday only



- 26 Amanda Spencer** creates an eclectic mix of hand built ceramic sculptures including Viking & Māori heads, yachts and boats, unique bird feeders, wind chimes and so much more.
59 First View Avenue, Beachlands



franklin_arts_trail



franklinartstrail

WITH THANKS TO THE

